

# CLOSING THE LOOP

OF THERMOFORMED PET TRAYS



in Europe

# We promote the use and recyclability of thermoformed PET trays, both monolayer and multilayer

RETRAY is a certification scheme of the Ecosense Foundation to consolidate a circular economy model in the value chain of thermoformed PET packaging.

▷ Aimed at sheet producers, tray manufacturers and food packers, as well as recyclers, recovery companies and waste managers of PET sheets & packaging



## RETRAY Process

- ▷ Traceability on the incorporation of recycled material (upstream)
- ▷ Traceability on waste management and limitation of non-recyclable materials (downstream)
- ▷ Includes UNE-EN 15343 requirements for the calculation of the recycled content of the products manufactured during a time frame
- ▷ Replaces the former ECOSENSE certification



## RETRAY Product

- ▷ Recycled content quantification (% rPET from tray-to-tray and other sources)
- ▷ Recyclability guidelines verification
- ▷ Requires RETRAY Process before

# HOW CAN YOU USE IT?

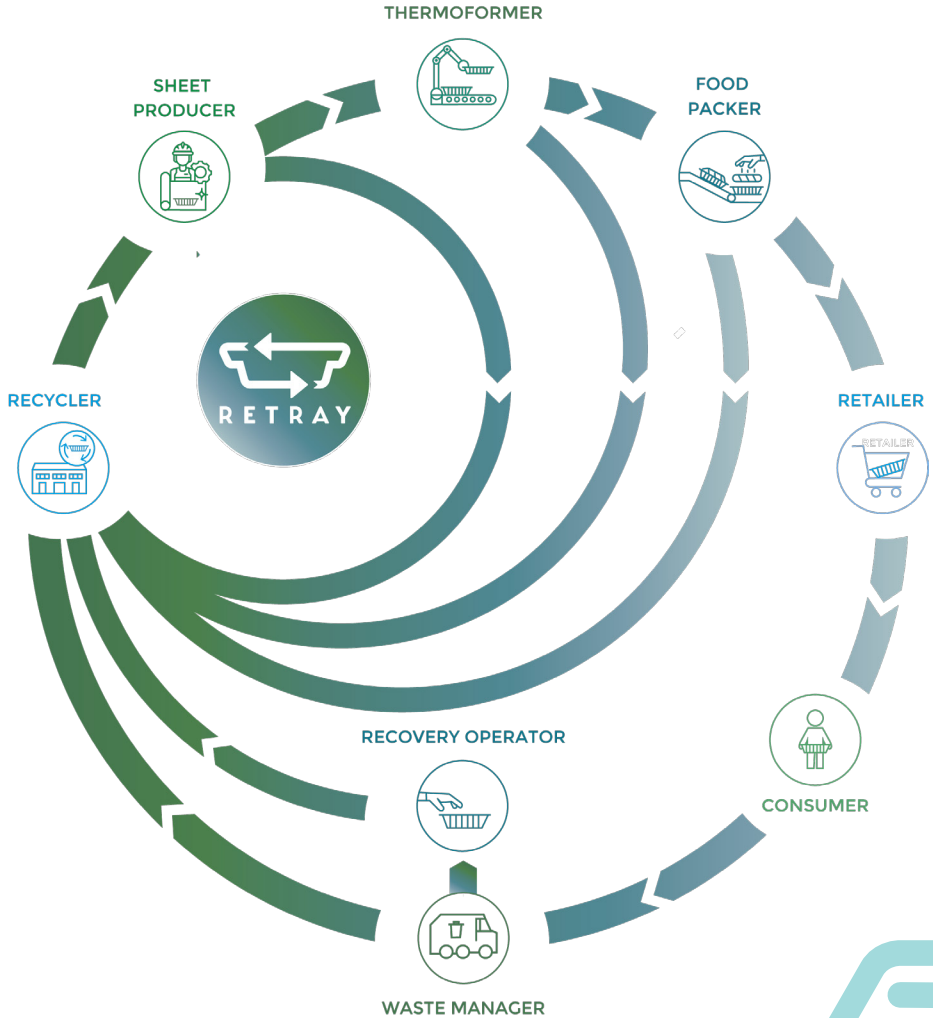
Would you like to guarantee to your clients and stakeholders the recyclability and recycled content of your products?

The loop is already closed.

01. It gives the right to use trademarks as marketing tools to communicate environmental commitments
02. It shows environmental good practices to customers and final consumer.
03. It is a reliable environmental claim guaranteed by an independent third-party.
04. It allows access to discount payments from Government taxes/tariffs.
05. It allows to demonstrate compliance with the legal framework of the European Strategy for Plastics in a Circular Economy



# Closing the loop by means of certification



# Clients who rely on us



Bandesur



ENVAPLASTER



Ondupet



INDESLA  
PACKAGING



SP  
GROUP



Fratelli Riva

GOIKOA

Monells



pre  
zero



sulayr  
Recycling PET Trays





**ECOSENSE**

**FOUNDATION**

RECYCLED & RECYCLABLE PET PACKAGING

[www.ecosensefoundation.org](http://www.ecosensefoundation.org)